

San Fedele alloggi



Telefoni fissi: 0577-318449 - 0577-318217
338 - 3030095

Cellulare prenotazioni
335 - 6814606

Cellulare

Email prenotazioni:

Email

Sito internet

Pagina Facebook

info@sanfedelealloggi.it

sanfedelealloggi@virgilio.it

www.sanfedelealloggi.it

San Fedele Alloggi

Locazioni turistiche

San Fedele - SP 101 Km. 4.7 - Montalbucco, 132 - I 53100 SIENA - www.sanfedelealloggi.it



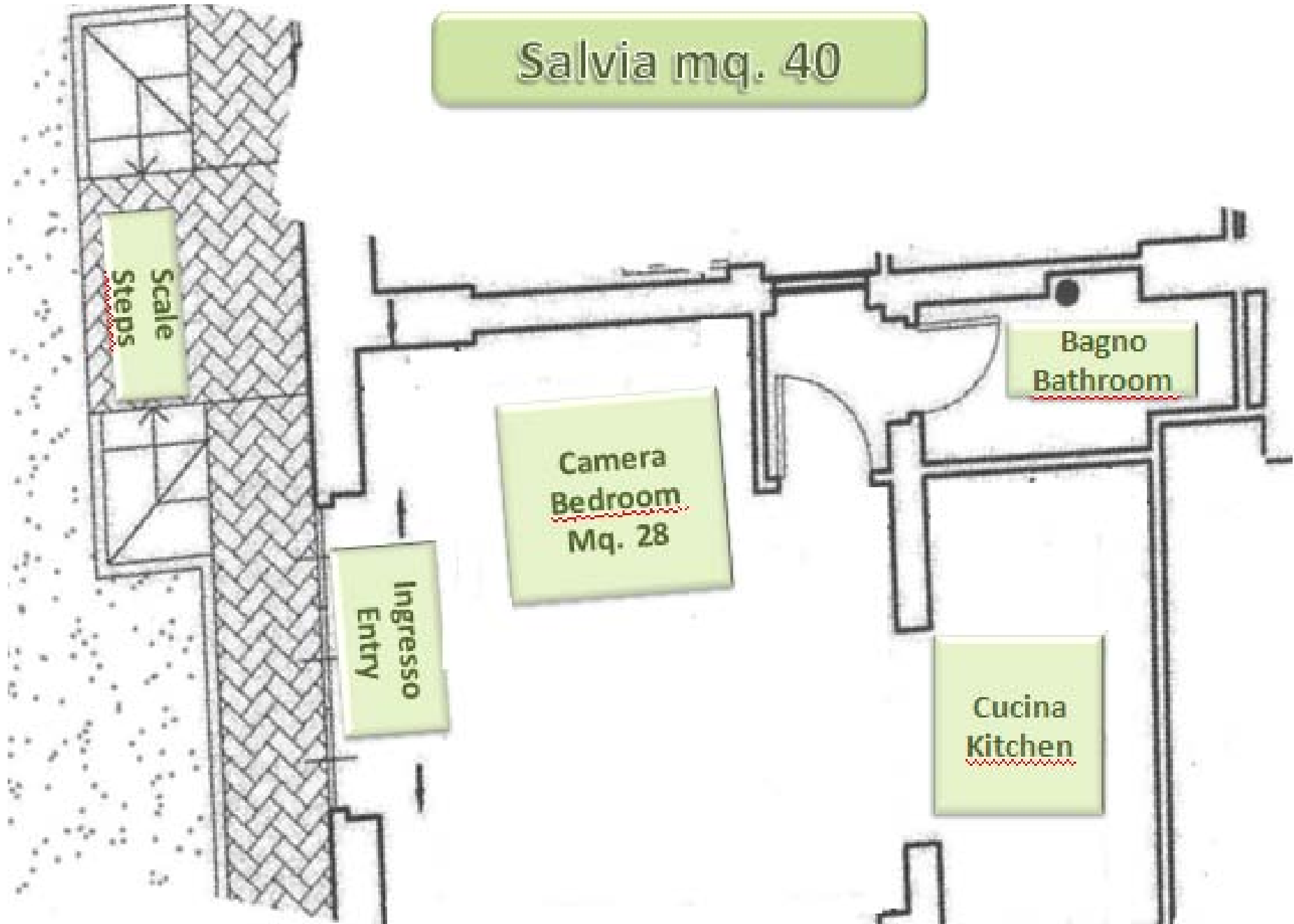


San Fedele is located on a hill 5 km north-west of Siena in the open countryside (GPS 43.317270 to 11.272541)

The property is managed by the owners who make you feel at home, making you enjoy your stay in a friendly atmosphere.

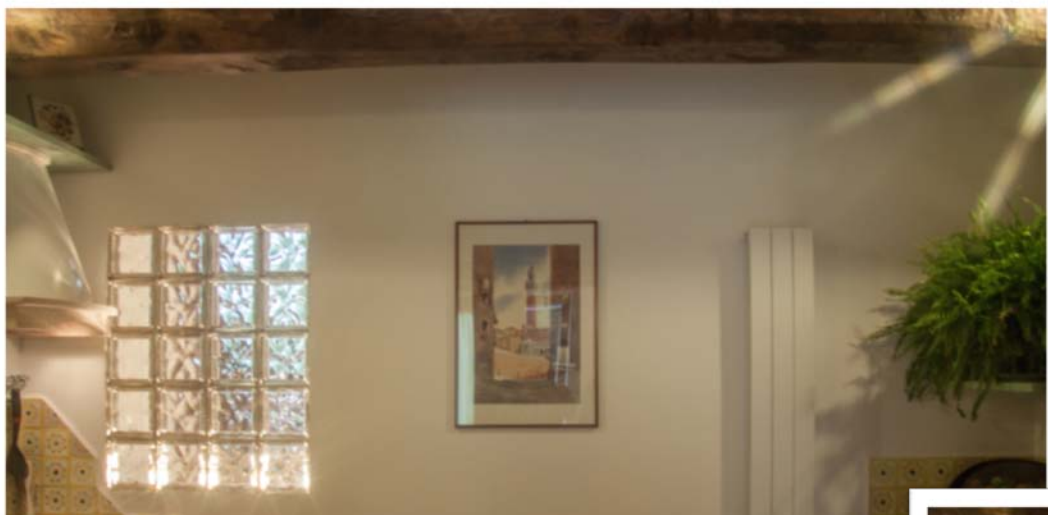


Salvia mq. 40



San Fedele - SP 101 Km. 4.7 - Montalbucco, 132 - I 53100 SIENA - www.sanfedelealloggi.it





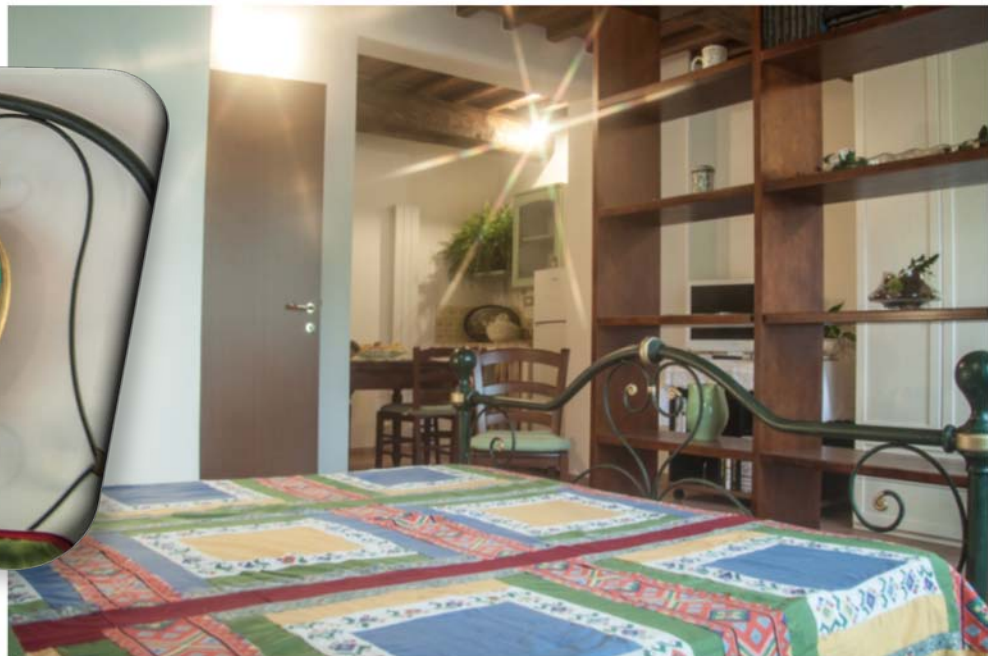


One-room apartment is on the ground floor and has a total area of 40 square meters. It is restored from an old hut with wooden beamed ceilings and it is decorated in a simple but functional way. It is fully furnished and equipped and consists of:

- 1 sleeping area with double bed;**
- 1 dining area with kitchen;**
- 1 bathroom with shower.**

**Independent heating.
Covered parking and outdoor space.**





The apartments are granted through contract: of
“LOCAZIONE TURISTICA” (SEASONAL LEASE AGREEMENT)

(art. 1 comma 2 lettera C legge 431 del 1998 art. 1571 e seguenti del Codice Civile.)

The occupation of the accommodation is therefore subject to the signing of a specific standard contract the text of which is available on the our website at the page Attachments / Contract.

The relationship between the owner of the structure and the tourist is exclusively lease between private and the leased property is delivered fully furnished temporary use.

L 'includes furniture as well as furniture and furnishings, including: dishes, some small appliances necessary for the use of kitchen (where is this), fridge with freezer compartment, microwave, hair dryer, fan, internet and digital TV.

The linen (bedroom, kitchen and bathroom) is just starting.

Large outdoor area with carport, deck chairs, barbecue.

Since we excluded all the services of a hotel general, cleanliness, order and good condition of the apartment will be borne by the tourist who must make their own, considering it appropriate or necessary, provision of additional stocks of both materials the cleaning of linen.

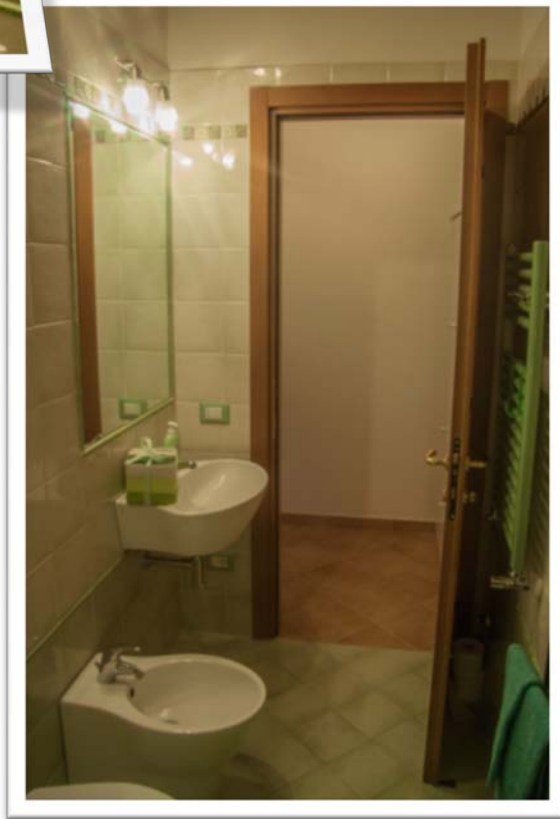
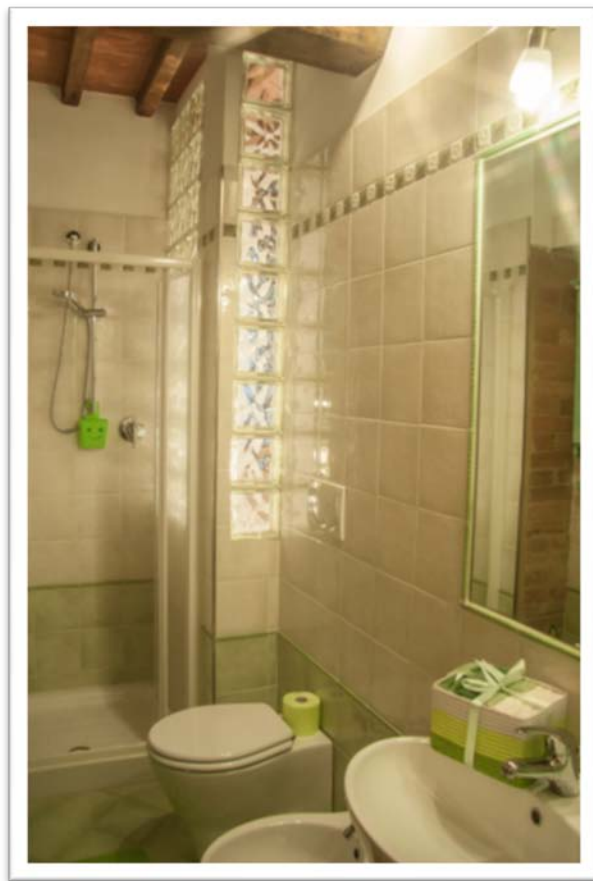
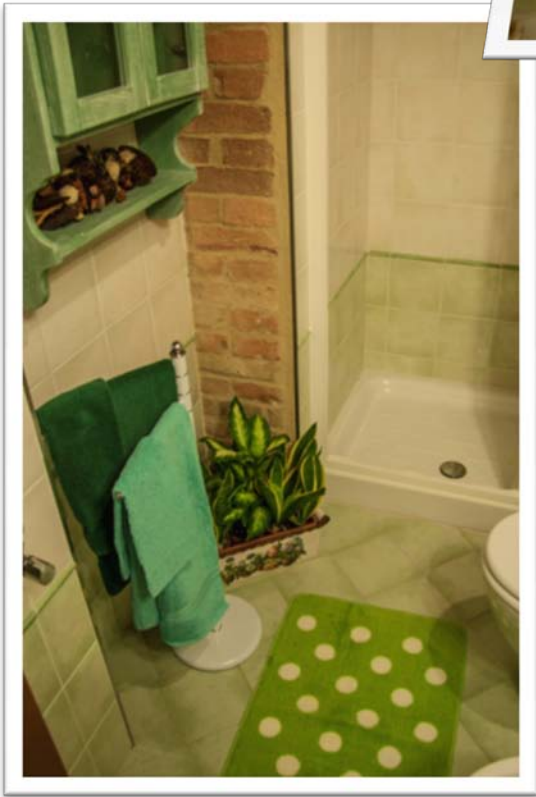
Check-in: from 4.00 a.m. to 9:00 p.m. .

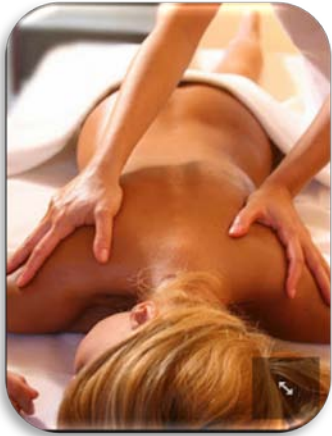
Check-out: no later than 10:30 a.m. the apartment must be vacated.

Reservations are valid only upon receipt by the owner, the payment of the deposit and confirmed by e-mail.

The price unless otherwise indicated in the offer also includes taxes and consumption.







AGREEMENTS WITH SPA AND WELLNESS

San Fedele has an agreement with the Spas in Rapolano Terme and in Petriolo. The distance from the three plants is about 30 km (half an hour by car).

Terme "Antica Querciolaia" e "Petriolo" :

daily entrance to the swimming pool area just 9 euro presenting to our reception ticket and a 10% discount on treatments at the wellness center.

Terme "San Giovanni":

daily entrance to the swimming pool area just 10 euro presenting our ticket to the reception.





BOOKING AND PAYMENT

To book you must accept the offer sending us a reply by email and send us a deposit using one of the following ways :

- *Bank transfer (you will be informed of the IBAN)*
- *Accreditation through Pay Pal*
- *Credit card with a surcharge of 4% of such fees charged by the operator cards.*



San Fedele alloggi

Podere San Fedele

Strada Provinciale di Montemaggio 101 Km. 4.7
Montalbuccio, 132 - 53100 SIENA (Italia)

Telefoni fissi: +39 577 318449 - 577 318217

Cellulare prenotazioni 338 - 3030095

Cellulare 335 - 6814606

Email prenotazioni: info@sanfedelealloggi.it

Email sanfedelealloggi@virgilio.it

Sito internet www.sanfedelealloggi.it

